



imageWARE Enterprise Management Console

- device discovery
- device monitoring
- device configuration

SOFTWARE SOLUTIONS

Device Name	Suggested By
Printer Driver Management	George
Device Discovery	Ralph
Address Book Management	Sammy
Printer Copiers	

Centralized, Cross-Enterprise Network
Device Management



Maximize Uptime Across Your Enterprise

If you're frustrated by numerous individual device management utilities, imageWARE Enterprise Management Console delivers a streamlined, centralized point of control for all devices installed across your enterprise. This highly scalable, Web-based utility can manage multiple Canon and third-party devices on most customer networks.

To reduce traffic, multiple servers can be installed on your network in different locations. Simply place device management portals where they're needed most, and:

- **Identify device configurations**

IT administrators can identify finishing and feature configurations on the MFP or printer (e.g., all devices that support the "Booklet" function), and enter special data such as Asset Tag, Contact Number, and Lease End Date.

- **Group devices logically**

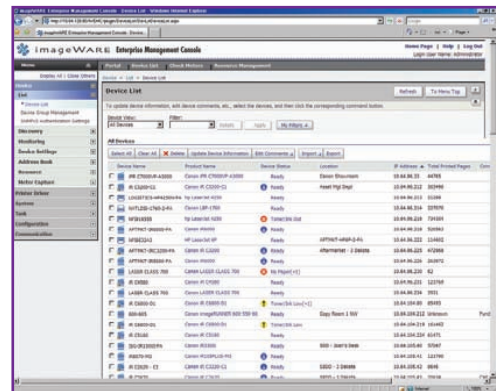
Simplify device location by logically grouping them (e.g., "N.Y. Office," "Building 2").

- **Manage third-party devices**

Consolidate management of all network devices that comply with the standard printer MIB, regardless of brand or manufacturer.

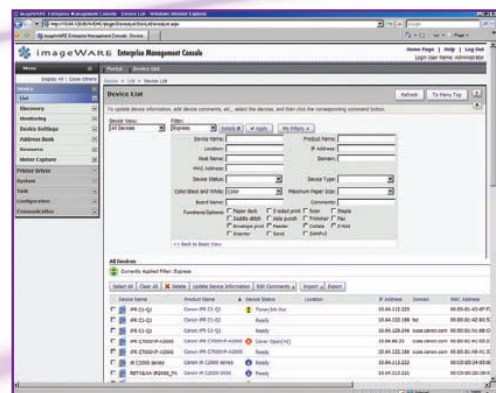
- **View device status in real time**

For fast resolution of errors such as paper jams or out-of-toner/ink conditions, connected devices immediately report status changes via e-mail to a system administrator or specific end-user.

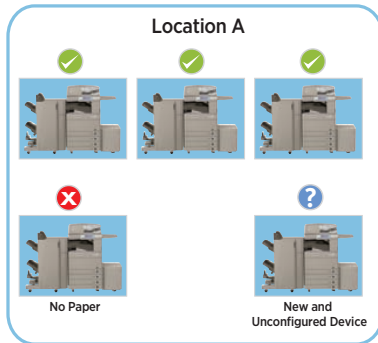


- **Customize viewing preferences**

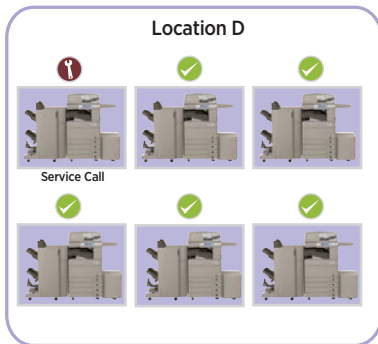
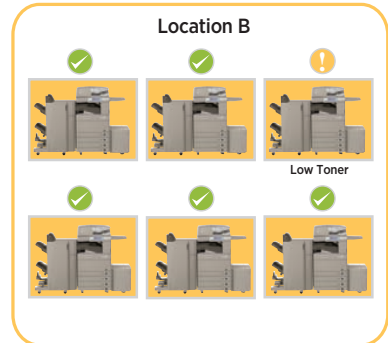
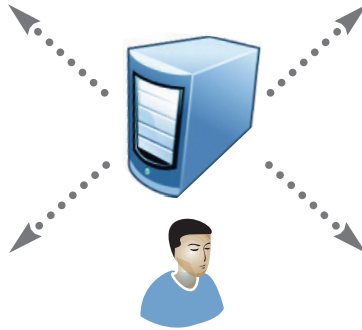
Sort devices by protocol, type, or group (e.g., "all black-and-white printers") to segment and manage them as your environment demands.



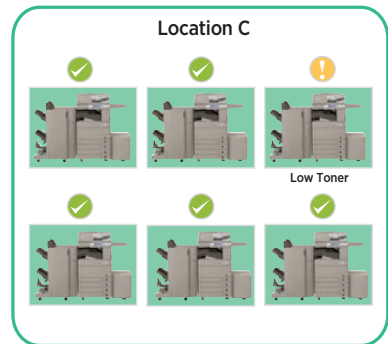
imageWARE Enterprise Management Console



imageWARE Enterprise Management Console



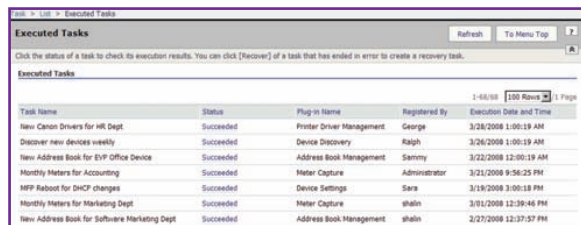
- Centralized Device Management
- Device Discovery
- Device Configuration
- Device Monitoring
- Scalable



Automated Task Management To Simplify Your Day

It's virtually impossible for any corporate IT staff to physically modify the Address Books of every individual device across the enterprise each time an employee joins, transfers, or leaves the company. Can you imagine the drain on productivity if this were done?

You can avoid such a scenario with imageWARE Enterprise Management Console. It automatically executes IT administrator-created instructions and tasks, either immediately or at timed intervals. Administrators have complete control to initiate any task. And, to minimize business disruption, device information can be retrieved and delivered overnight or on weekends.



Task Name	Status	Plug-in Name	Registered By	Execution Date and Time
New Canon Drivers for HR Dept	Succeeded	Printer Driver Management	George	3/28/2008 1:00:19 AM
Discover new devices weekly	Succeeded	Device Discovery	Ralph	3/26/2008 1:00:19 AM
New Address Book for HR Office Device	Succeeded	Address Book Management	Sammy	3/22/2008 12:00:19 AM
Monthly Meters for Accounting	Succeeded	Meter Capture	Administrator	3/23/2008 9:56:25 PM
MFP Rollout for DMCY changes	Succeeded	Device Settings	Sara	3/19/2008 3:00:18 PM
Monthly Meters for Marketing Dept	Succeeded	Meter Capture	phain	3/01/2008 12:39:46 PM
New Address Book for Software Marketing Dept	Succeeded	Address Book Management	phain	3/27/2008 12:37:57 PM

Some ways imageWARE Enterprise Management Console can improve your productivity include:

- **Discovery of new devices**

Through SNMP, you can query all Canon and third-party networked devices and automatically add new ones to the database for initial setup and configuration.

- **Delivery of device settings**

Retrieve device settings such as IP addresses, locations, and System Manager contact information, then reset them to default conditions to minimize help desk calls or reboot a fleet of devices.

- **Device monitoring**

Devices can be monitored continuously, and common functions such as meter retrieval can be easily accomplished.

Expand Your Control

Reduce your total cost of ownership even as you increase device control. The unique architecture of imageWARE Enterprise Management Console provides a foundation for future expansion through plug-ins that maximize printing assets across your entire enterprise. These plug-ins include:

- Meter Capture Plug-in
- Printer Driver Management Plug-in
- Address Book Management Plug-in
- Resource Management Plug-in

Plus, additional plug-ins that offer even more areas of functionality are soon to follow.

Built-in Security

Security is a critical part of your enterprise — and an important part of imageWARE Enterprise Management Console. It features Secure Socket Layer (SSL) security and also offers functionality that prevents individual users from viewing device groups. In addition, the software also supports native Active Directory integration.

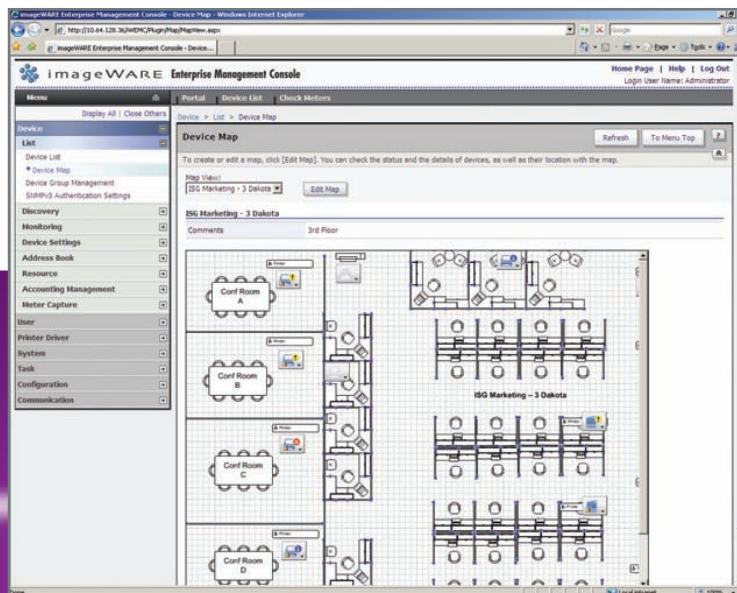
imageWARE Enterprise Management Console

Scalability. Reliability. Productivity. Efficiency. All in real time. You demand these from your Enterprise Resource Planning (ERP) systems and every link in your supply chain. Shouldn't you demand them from your network device management solution?

Take total control of your printing infrastructure—and hold it accountable to the highest performance standards—with Canon imageWARE Enterprise Management Console. This unified print and device management software solution optimizes IT efficiencies and reduces total cost of ownership across your entire organization. The result—networked device control that's easier than ever before.

With imageWARE Enterprise Management Console, you can streamline device control, speed problem resolution, automate tasks, and reduce IT burdens. You can even expand the solution through plug-ins that optimize administration efficiency throughout your entire enterprise.

imageWARE Enterprise Management Console—your total network device management solution.



The Power to Manage Information

This is Canon imageWARE Enterprise Management Console. The next step in the evolution of device management software and an essential part of the Canon imageANYWARE strategy: the power to manage information regardless of form, content, or location.



Visit our Web site at www.imageWARE.com

A Smarter Way to Work

CANON is a registered trademark of Canon Inc. in the United States and may also be a registered trademark or trademark in other countries. IMAGEWARE is a registered trademark of Canon U.S.A., Inc. in the United States and is a trademark of Canon Inc. in certain other countries. IMAGEANYWARE is trademark of Canon. All other referenced product names and marks are trademarks of their respective owners and are hereby acknowledged. Some items may not be available at this time; please check for availability. Specifications and availability subject to change without notice.

©2010 Canon U.S.A., Inc. All rights reserved.

0145W642
0610-iWEMC-2.5M-LTM

1-800-OK-CANON
www.usa.canon.com

Canon U.S.A., Inc.
One Canon Plaza
Lake Success, NY 11042